



DAS Delivers: Fleet Services NewsBrake

Department of Administrative Services ~ Empowering People · Collaboration · Customer Service

January 2024

Winter Weather Driving Guidelines

All drivers should review the [Winter Driving Guidelines](#) and the [DOT Traveler Information](#) website before driving in possibly hazardous conditions.

Vehicle Safety Features

[My Car Does What](#) is a website that lists safety features available in vehicles and gives the definition of each feature. Drivers can specify their vehicle make, model and year and download user manuals for their specific vehicle from the manufacturer's website.

Vehicle Opportunities

Supplies such as ice scrapers, shovels, sand bags and washer fluid are available to order on the [Vehicle Supplies Order Form](#). Follow the instructions at the top of the form and your order will be fulfilled by DAS Fleet. Pick up at the fleet office only, no delivery.

Vehicle Fun Facts: The Snow Plow



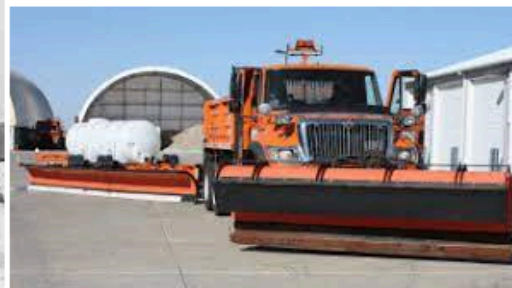
Snow Plow Train Courtesy of California State Railroad Museum



1921 Snow Plow Courtesy of Minnesota Historical Society



Horse-drawn Snow Plow courtesy of Horse Nation



Modern Snow Plow Courtesy of Iowa DOT

DAS Fleet Services, 109 SE 13th St., Des Moines, Iowa 50319

HOURS: Monday: 6:00 am - 4:30 pm • Tuesday - Friday: 7:00 am - 4:30 pm

CONTACT: Customer Service: 515-281-3162 • After Hours: 515-725-2243

Risk Management: das.risk@iowa.gov • Fleet Motor Pool: motorpool@iowa.gov • State of Iowa Drivers: SOIdrivers@iowa.gov

For more information: <https://das.iowa.gov/procurement/fleet-services>